

**GLENWOOD PARK
UNITED METHODIST CHURCH
NEWSLETTER**

**10000 East 23rd Street
Independence, MO 64052
Church Phone #(816) 254-5116
Secretary's phone # (816) 836-1558
E-mail - GLPARKUMC@aol.com
www.glenwoodparkumc.org**

**Pastor Sarah Schofield-Wimberley
Cell # (816) 509-5450**

DECEMBER 2009

FROM THE PASTOR

Happy Advent!

It's hard to believe Winter is only three weeks away, isn't it? We have been blessed with an unusually warm Autumn, and it has been nice. The house across the street has irises re-blooming. I can see roses in my neighbor's back yard. I'm sure winter will be here soon enough.

At Glenwood Park things are bustling along. The UMW will be installing new officers soon, and the church will be decorated with poinsettias and garlands. It is always beautiful to see the sanctuary during this season. We will be studying the Advent and Christmas story this month, looking at the way God does "business"-- certainly not like humans do! God's list of star characters would be more of a "B" list than an "A" list-- God uses the most unlikely people for great works.

Perhaps God is trying to use you for something great! Have you prayed lately? God calls us all- we are all called to do God's will as God needs. And just like the people of the Bible, we never think we are up to the challenge- but God knows what we can do, remember, God knew us in the womb!

I hope you will join us for Breakfast with Santa, our monthly breakfast, our Christmas program, and worship each week. Remember, we miss you when you are away!

Merry Christmas, and Happy New Year!

Blessings,
Sarah



Laura Baumgarden
Loma Harleman
BW & Jean Fowler
Margaret Coffelt
Bob Payton
Helen Graves
Harry Helgason

Our deepest sympathy to . . .

Ed Mason on the sudden death of his sister Julia Campbell on Nov. 21.

Charlie Noah and family on the death of his sister-in-law Millie Nov. 30.



Following-- Inviting--Growing--Serving



UNITED METHODIST WOMEN

On Wednesday, Dec. 2 the UMW will have a potluck meal followed by installation of officers for 2010.

Our next meeting will be January 4 to plan the 2010 calendar.

All women are invited to join the UMW. Anyone interested in joining the UMW may contact any of the Methodist women or call the church office at 254-5116.

Respectfully submitted,
Judy Wolfe, secretary



If you would like to purchase a poinsettia in honor or memory of a loved one there is a sign up sheet in the sanctuary. Please designate the name(s) of your loved one(s) and whether your poinsettia is in honor or memory of them. The cost of a poinsettia this year is \$6. Please place payment in the collection plate and make sure to write "poinsettia" in the memo line if paying by check.



We need every ones help. I have set this up so we have certain food to bring each week. Korte/Rock Creek now has over 60 children that do not get any food on the weekends after they leave school. It is a call for us to help take care of the food needs for these children. So please give as you can. Every can will help.

December

Week ending Dec 6	Powdered Milk
Week ending Dec 13	Pudding Cups
Week ending Dec 20	Canned Soup
Week ending Dec 27	Juice (canned or plastic bottles)

Thank you for all your help. This is a very desperate need. We must do our part to take care of the children of our community. This will take us up to the end of the year. I will stay in touch with Tony at the school to see if there is any special need.

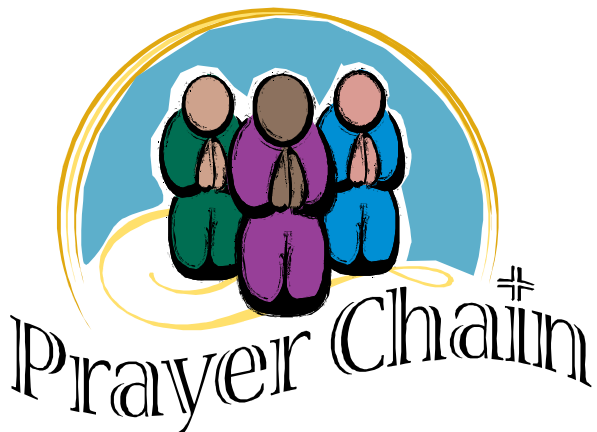
Patty Michalski(Wisemore)

MATTHEW 25 FUND

"For I was hungry and you gave Me food; I was thirsty and you gave Me drink; I was a stranger and you took Me in; I was naked and you clothed Me; I was sick and you visited Me; I was in prison and you came to Me."

Matthew 25:35-36

If you would rather make a donation in honor or memory of a loved one to the Matthew 25 fund there will be a sign up sheet for that also. Our Matthew 25 fund is an important outreaching ministry helping people in need in our community. Due to the current state of our economy there is an even greater need for assistance. Please prayerfully consider donating to the Matthew 25 fund.

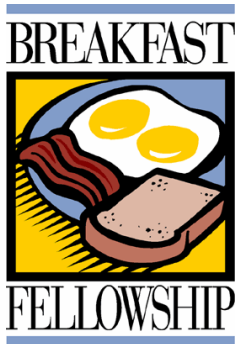


Our prayer chain is an important ministry and will be updated in January. Prayer concerns are shared by telephone and e-mail. If you would like to be on the prayer chain list please let Judy know. If you are currently on the prayer chain list and want to be removed she needs to know that also.

CHRISTMAS CARDS



The youth group will once again provide the Christmas card post office for our Glenwood Park family. Christmas cards will be collected and sorted in Fellowship Hall. **Please do not place cards in the post office that will need to be mailed.** All donations for the card service will be used for 2010 Conference youth events.



We hope you will make plans to join us for the next fellowship breakfast on Saturday, Dec. 5 from 7:30-10:00 a.m. All you can eat breakfast for a donation of \$5.50.

CLASSICS CLASS CHRISTMAS PARTY

The Classics Sunday school class invites you to join them for their Christmas get together Friday, Dec. 11 at 6:00pm. Bring a dish for the potluck meal and a \$1 gift for the gift exchange.



PANCAKES WITH SANTA

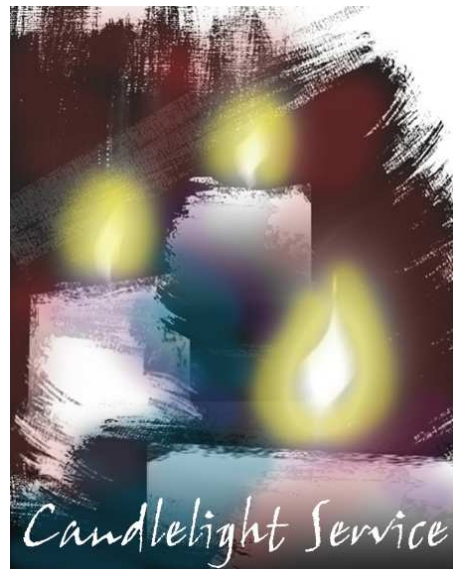
On Saturday, Dec. 12 from 8-10:30a.m., a free pancake breakfast will be served. Santa Claus will also be there, so please make sure to bring lots of children for a fun time. Children will have their pictures taken with Santa. So let's fill Fellowship Hall with kids, laughter and delicious pancakes.

CHILI AND SOUP TO GO

Virgil's famous chili will be available on a to-go basis on Saturday, December 19th from 11 a.m. – 2 p.m. Vegetable soup and chicken noodle soup will also be available. The chili and soup will be \$2.50 for a 16 oz. container. You will be able to select an assortment of homemade cookies for \$3 a dozen. Proceeds benefit the youth group's 2010 conference events.



You are invited to take part in Christmas caroling Saturday, Dec. 19. Carolers will meet at church at 5:00 p.m. and carpool to homes to be visited. This is a fun event for the carolers and the people they visit. We hope you will make plans to share in this wonderful Christmas tradition.



We hope to see you at the Christmas Eve service on Dec. 24 at 5:00 p.m. It is always a very special service as we celebrate the birth of Jesus Christ

**THOSE WHO
SERVE IN DECEMBER**

Dec. 6

Greeter Jackie Gray
 Ushers Ken Campfield
 Nathan Campfield
 Acolytes Sam Wimberley
 Nursery Bev Campfield
 Briana Campfield

Dec. 13

Greeter Kathy Johnson
 Ushers Matt Mallinson
 Danny Mallinson
 Acolytes Rachael Mallinson
 Nursery Kathy Mallinson
 Olivia Utley

Dec. 20

Greeter Wanda Roop
 Ushers Mike Zans
 Steve Wolfe
 Acolytes Mikayla Zans
 Nursery Amy Zans

Dec. 27

Greeter Jackie Gray
 Ushers Ken Campfield
 Nathan Campfield
 Acolytes Sam Wimberley
 Nursery Bev Campfield
 Briana Campfield

Happy Birthday to

12/06 Mallinson, Danny
 12/07 Waterfield, Amy
 12/08 Harleman, Virgil
 12/09 Thompson, Mary Alice
 12/09 Michalski, Patty
 12/17 Baumgarten, Adrianna
 12/17 Lyons, Rayleene
 12/20 Richerson, Debbie
 12/21 Payton, Samantha
 12/23 Rhoades, Jayme

Happy Anniversary to . . .

12/01 Duncan, Ramon & Eva

WEEKLY ATTENDANCE

	SUNDAY		WORSHIP	
	SCHOOL		2008	2009
11/01	36	55		46
11/08	50	35		48
11/15	43	35		47
11/22	46	33		44
11/29	35	29		44
	Avg	37	Avg	46

**GLENWOOD PARK
UNITEDMETHODIST
CHURCH**
Pastor Sarah Schofield-Wimberley
9:00 a.m. - Praise service
9:15 a.m. Coffee & Donuts
10:00 a.m. Sunday School
11 a.m. Traditional Worship
(nursery provided)

OUR MISSION

To be a warm and caring Christian community that invites people to follow Jesus Christ, helps everyone to grow in faith, and encourages everyone to serve God and to serve others.

